



Third Avenue W10

Parkheath  
*Sold on Service*





## Third Avenue, W10, £500,000, Leasehold

### Westminster City Band D

- Beautiful two bedroom duplex apartment
- Charming, well styled accommodation
- Original period features
- Highly sought after location
- Queens Park conservation area
- Close proximity to Queens Park, Kensal Rise and Notting Hill
- Bakerloo Line and Overground transport links
- Good internal order
- Chain free
- EPC: Rating D, Council Tax: Westminster band D

Belsize Park/Hampstead  
208 Haverstock Hill  
NW3 2AG  
Sales 020 7431 1234  
Lettings 020 7431 3104  
[nw3@parkheath.com](mailto:nw3@parkheath.com)

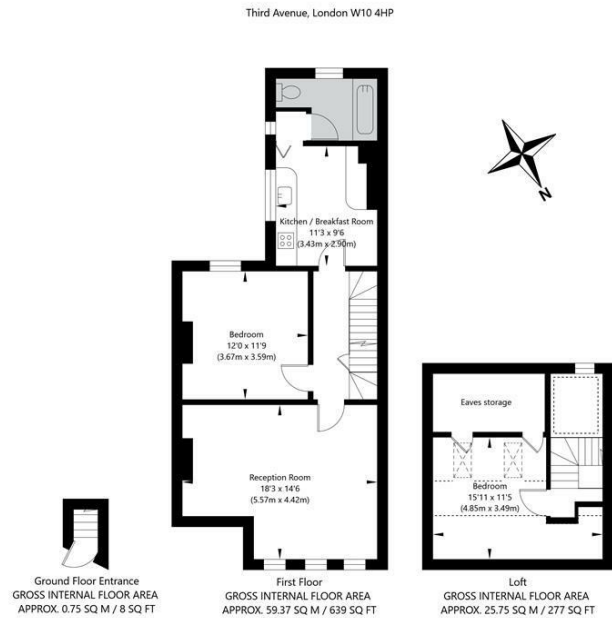
South/West Hampstead  
192 West End Lane  
NW6 1SG  
Sales & Lettings  
Tel 020 7794 7111  
[192@parkheath.com](mailto:192@parkheath.com)

Kensal Rise  
54-56 Chamberlayne Rd  
NW10 3JH  
Tel 020 8960 4845  
[kensal@parkheath.com](mailto:kensal@parkheath.com)

Property Management  
192 West End Lane  
NW6 1SG  
020 7433 6174  
[pm@parkheath.com](mailto:pm@parkheath.com)

**Parkheath**  
*Sold on Service*

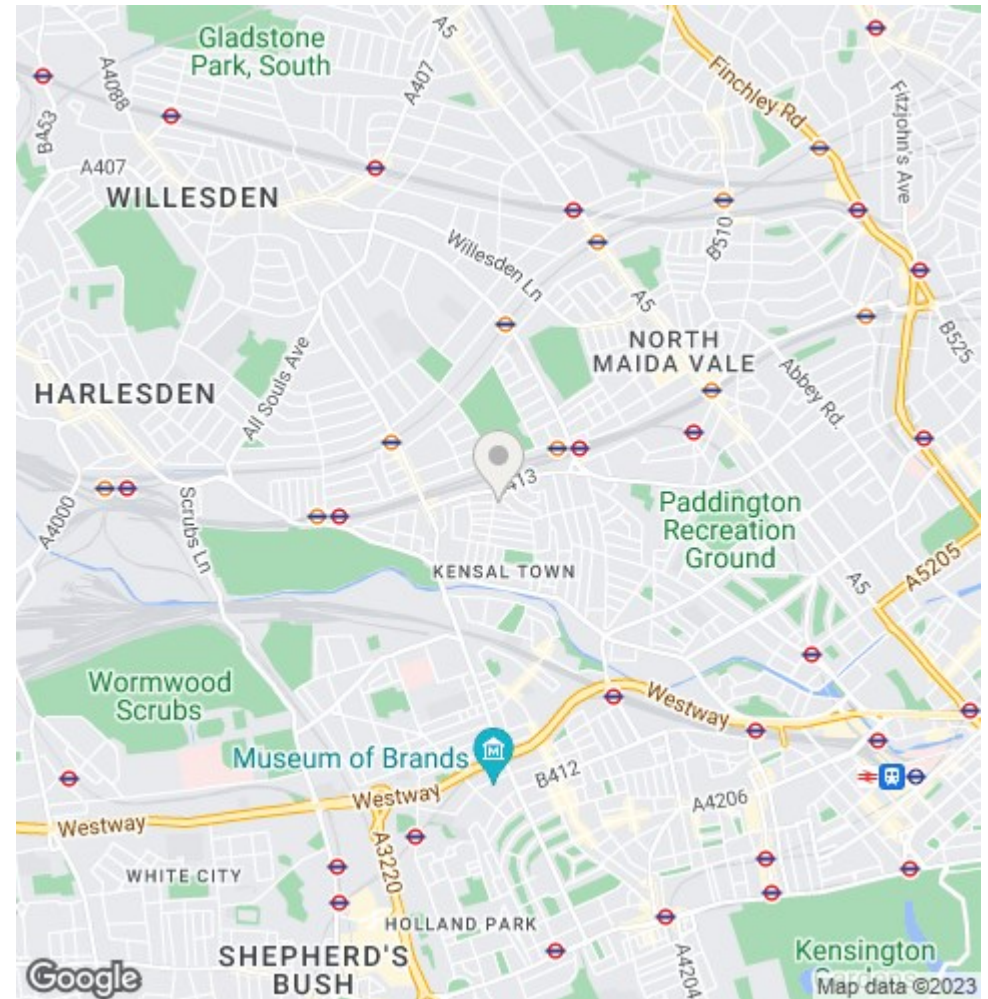
[www.parkheath.com](http://www.parkheath.com)



APPROXIMATE GROSS INTERNAL FLOOR AREA 85.87 SQ M / 924 SQ FT  
 APPROXIMATE GROSS INTERNAL FLOOR AREA EXCLUDING UNUSABLE SPACE 71.94 SQ M / 774 SQ FT

THIS FLOOR PLAN IS FOR ILLUSTRATIVE PURPOSES ONLY AND  
 SHOULD BE USED FOR THIS PURPOSE BY PROSPECTIVE APPLICANTS AS ITS NOT TO SCALE.

(C) AMBERSHORE PIX LIMITED / PHOTO - VIDEO - FLOOR PLANS / 0800 999 1577 / WWW.AMBERSHOREPIX.CO.UK



The particulars do not constitute part of an offer or contract. The particulars, including text, photographs and plans, are for the guidance only of prospective purchasers/tenants and must not be relied upon as statements of fact. The descriptions provided therein represent the opinion of the author and whilst given in good faith should not be construed as statements of fact. Nothing in these particulars shall be deemed a statement that the property is in good condition or otherwise or that any services or facilities are in good working order. All measurements are approximate